

## WIERTNICZA 133 OFFICE BUILDING



### Building

- 6 garage spaces,
- 9 guarded spaces,
- Outdoor public parking,
- Bicycle parking,

### Other information

### Parking

- Elevator,
- Adaptation for the disabled,
- Facility meets fire safety requirements,
- 24-hour monitoring

### Amenities

 **Bus stop**  
180, 131 line

 **Shops**  
Frac, Żabka

 **Bicycle path**  
In front of the building

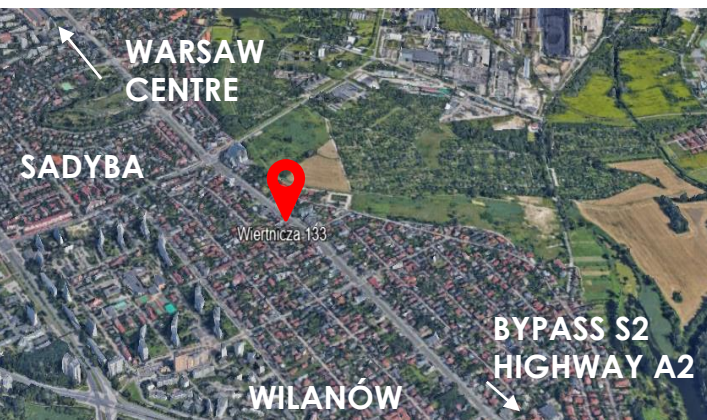
 **ATM**

 **Bus loop**  
Sadyba, Wilanów

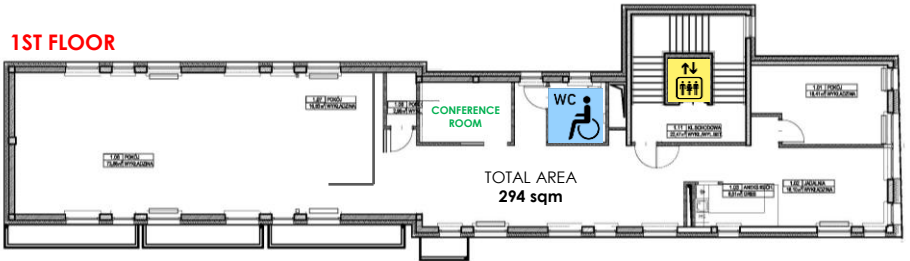
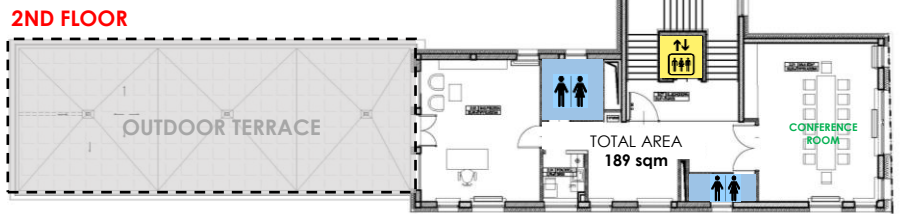
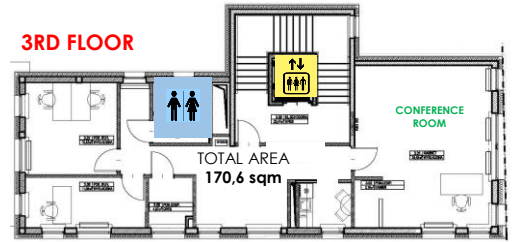
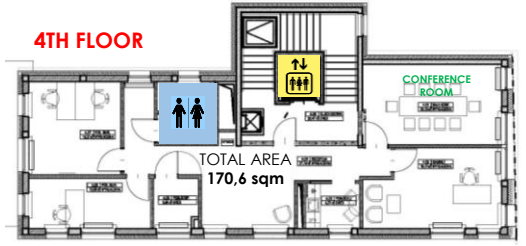
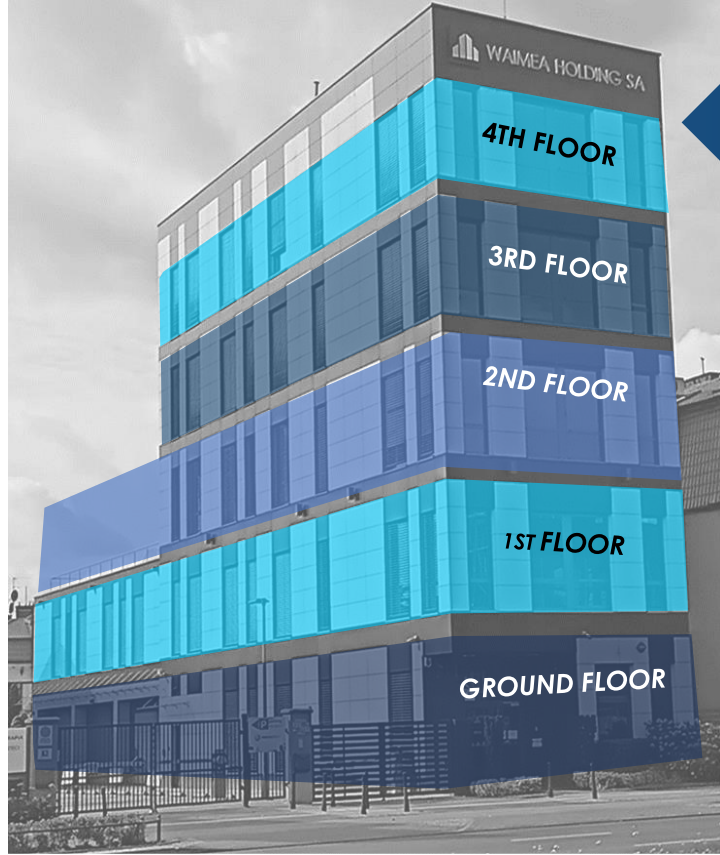
 **Restaurants**

 **Gas station**  
Orlen, Shell

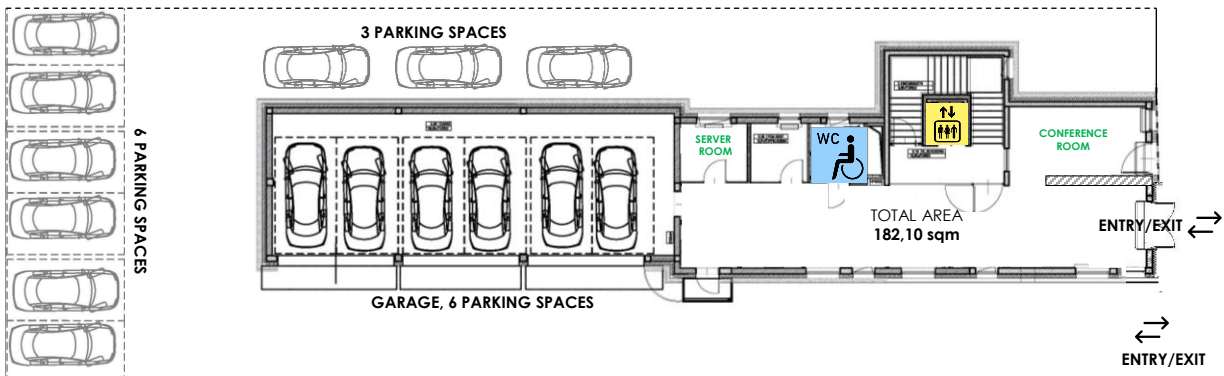
 **S8 bypass**  
A4 highway



# WIERTNICZA 133 OFFICE BUILDING



**GROUND FLOOR**



NOTE